

DIN 6926

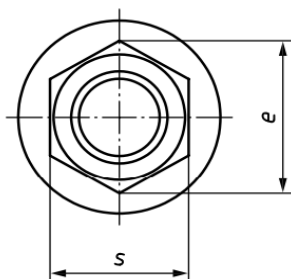
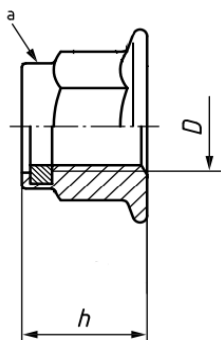
Dado esagonale autofrenante con flangia e inserto non metallico

Prevailing torque type hexagon nut, with flange and with non-metallic insert

Disponibile/Available

A2 

A4 



Thread size D	M5	M6	M8	M10	M12	M14	M16	M20	
	----	----	M 8 x 1	M 10 x 1	M 12 x 1,5	M 14 x 1,5	M 16 x 1,5	M 20 x 1,5	
	----	----	----	M 10 x 1,25	M 12 x 1,25	----	----	----	
$P^1)$	0,8	1	1,25	1,5	1,75	2	2	2,5	
e min.	8,79	11,05	14,38	16,64	20,03	23,36	26,75	32,95	
h	max.	7,1	9,1	11,1	13,5	16,1	18,2	20,3	24,8
	min.	6,74	8,74	10,67	13,07	15,67	17,68	19,46	23,96
m min.	3,2	4	5,5	6,5	8	9,5	10,5	14	
s	max. = nom.	8	10	13	15	18	21	24	30
	min.	7,78	9,78	12,73	14,73	17,73	20,67	23,67	29,16

Il diametro M14 è da evitare se possibile

The size M14 should be avoided, if possible

$P^1)$ è il passo del filetto

$P^1)$ is the pitch of the thread.

last edit 11/10/2019

DRAWING N. 1121